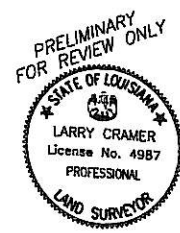
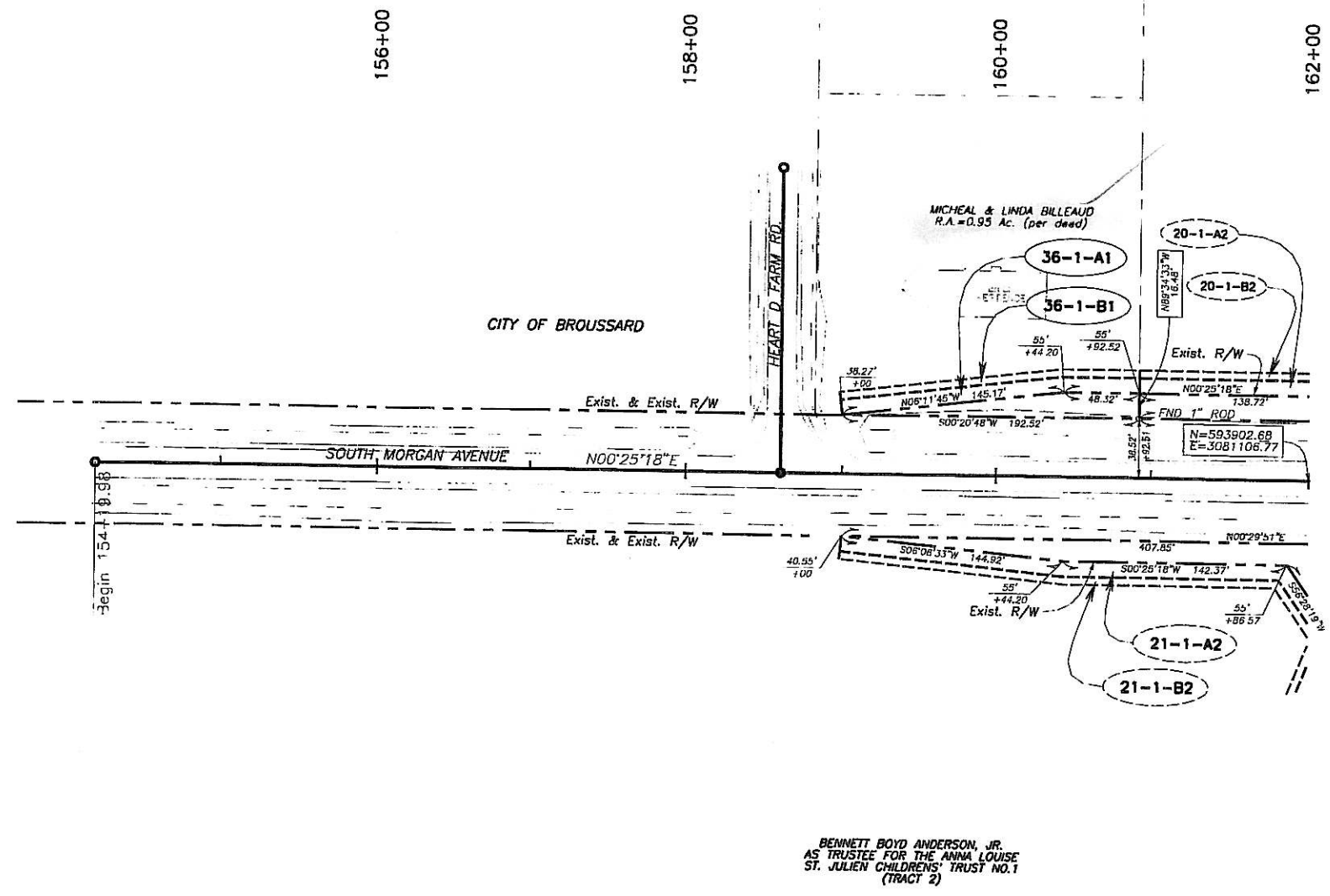
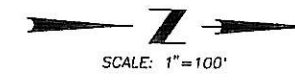


SOUTHWESTERN LAND DISTRICT  
T10S - R5E  
SECTION 33



**\*\* NOTICE TO THIRD PARTY UTILITY PROVIDERS \*\***  
The utility servitudes herein are granted to and managed by the City of Broussard. All third party utilities are required to make written application to the City of Broussard. Under the city's current plan of orderly utility placement, permits MAY be granted at the city's exclusive option.

NOTE: ALL PIPES AND MONUMENTS SHOWN HEREON WERE FOUND.

**LEGEND**

- REQUIRED RIGHT OF WAY LINE
- APPARENT PROPERTY LINE
- SERVITUDE LINE

NOTE:  
1. THE COORDINATES AND BEARINGS SHOWN HEREON ARE GRID AND ARE ON THE LOUISIANA COORDINATE SYSTEM, SOUTH ZONE, NAD 83. DISTANCES SHOWN ARE HORIZONTAL GROUND DISTANCES IN U.S. SURVEY FEET.  
2. TO CONVERT FROM GRID BEARINGS TO TRUE BEARINGS, USE  $\theta = -00^{\circ}18'57''$

NOTES:  
DATA ON THIS PLAT OBTAINED FROM LA DOTD, RIGHT-OF-WAY MAP OF STATE PROJECT NO. 828-39-0023, FILE NO. 3-18-1-020, R/W SHEET 36, DATED 8/1/2003 AND REVISED 4/30/2007.  
THIS PLAT DOES NOT REPRESENT A BOUNDARY SURVEY.

PARCEL	OWNER	AREA A2	AREA B2
36-1	MICHAEL & LINDA BILLEAUD	0.045 Ac.	0.022 Ac.

SHEET	17
PARISH	LAFAYETTE PARISH
CLIENT	CITY OF BROUSSARD
PROJECT	7890-01
<b>Sellers &amp; Associates, Inc.</b> PLANNERS ENGINEERS 148-B Easy Street, Lafayette, LA 70506 (337) 282-0777	
SERVIDUTES TO BE ACQUIRED BY <b>CITY OF BROUSSARD</b> ALONG AMBASSADOR CAFFERY PARKWAY (LA 89 - US 90) SERVITUDE PLAT	
DRAWN BY	L. CRAMER
DATE	3/4/2009
SCALE	1"=100'
PROJECT	7890-01
FILE NO.	7890-01-17
NO.	DATE
REVISION	DESCRIPTION
BY	DATE

PRELIMINARY - FOR REVIEW ONLY  
 THIS DOCUMENT IS NOT TO BE USED FOR  
 CONVEYANCE, SALES, OR  
 AS THE BASIS FOR ISSUANCE OF A PERMIT.

Path: K:\DATA\7890\7890-01\7890-01.dwg Plot Date/Time: Wed Mar 4 2009 / 4:20:29